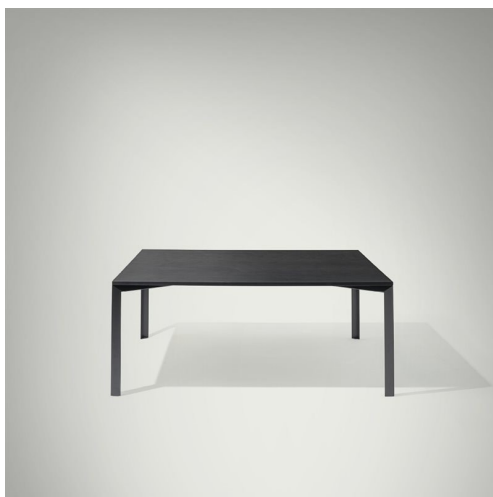


L45

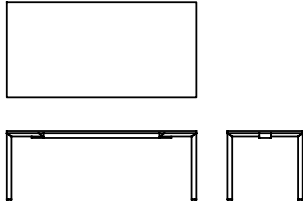
Guglielmo Poletti · 2020

The fundamental aspects of the project are contained in a single detail, around which all the work has been developed: the joint between the leg and the top, characterised by a contact reduced to an absolute minimum, based on the meeting up of the respective vertices.



Available models

Tables and small tables collection with angular steel legs, 6 mm thickness, CNC-machined. Frame in angular steel with 5 mm thickness, CNC-machined. Top with wood, fenix or hand-spread concrete finishes.



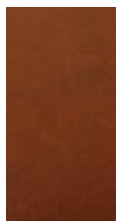
height
73 cm

dimension
120 x 80 cm
140 x 85 cm
180 x 90 cm
200 x 90 cm
240 x 100 cm
300 x 100 cm
180 x 180 cm

Finishing

Top

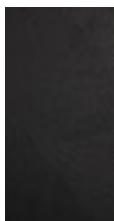
Handcraft finishes



D60
MATTONE
RED
CONCRETE



D65 LUNA
GREY
CONCRETE



D66 BLACK
CONCRETE



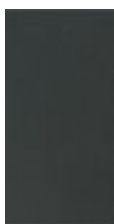
D61 WITHE
CONCRETE



D55 REALE
BLUE
CONCRETE



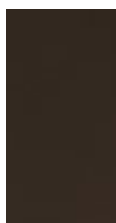
D57 OCRA
CONCRETE



D56
ARDESIA
CONCRETE



D58
GHIACCIO
CONCRETE

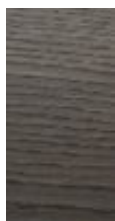


D59 CACAO
CONCRETE

Wood



C88
NATURAL
OAK



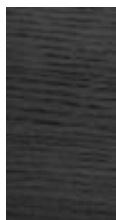
C76 OAK
GRAFITE



C68 OAK
MORO

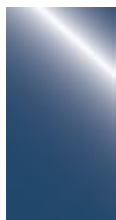


C95
WALNUT
CANALETTO



C14 OAK
BLACK
LACQUERED

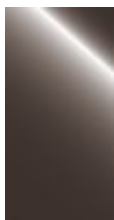
Glossy Polyester



L50 REALE
BLUE



L51
ARDESIA



L52 CACAO



L53 NERO

Frame

Lacquers



B13
SABBIA



B42
GRAFITE



B59 NERO
OPACO



B62
BIANCO
OPACO

Metals



A21
OSSIDIANA
SPAZZOLATO



A27
TITANIUM

