

# FIBREGLASS

the stylish, lightweight sun umbrella



**SHADE7**  
premium outdoor living



FIBREGLASS SUN UMBRELLAS ARE THE PERFECT UMBRELLA FOR COMMERCIAL ENVIRONMENTS AND WINDY LOCATIONS.

What sets the Fibreglass umbrella apart is the uniquely designed heavy duty 12mm fibreglass canopy arms (think fishing rods). These fibreglass arms can bend and flex making the umbrellas super durable, able to withstand wind and rough treatment. This sun umbrella also features strong resin and stainless steel parts and an easy to use rope and pulley system for opening and closing.





### FEATURES

The Fibreglass umbrella is cleverly designed and engineered to be durable, long lasting and easy to operate. Because of the fibreglass arms the umbrella is extremely durable and is able to withstand very high wind and tough conditions. The anodised aluminium post is very strong and able to be split in the middle to reduce the length for storage. The other benefit of the umbrella is that while it is one of the strongest outdoor umbrellas on the market, it is also one of the lightest umbrellas. This makes it easy to carry if it needs to be moved or stored.



HEAVY DUTY ALUMINIUM SPLIT POLE



DURABLE STAINLESS STEEL PULLEYS AND FIXINGS



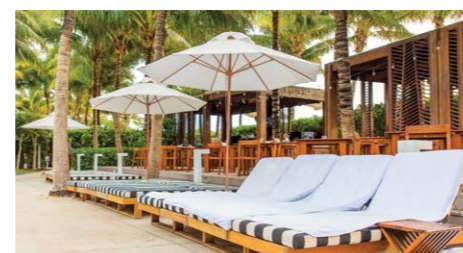
SUPER STRONG FIBRE-GLASS ARMS AND JOINTS



HIGH QUALITY ROPE AND PIN OPENING SYSTEM

### FIBREGLASS ADVANTAGES

- Lightweight and extremely durable fibreglass arms
- Strong 2.2mm thick aluminium post
- 3 year back to base warranty on frame and components
- Heavy duty resin and stainless steel parts
- Post can be split into two halves for easy storage/transport
- Easy to open and close with rope and pulley system
- Rust free aluminium & fibreglass frame



### INSTALLATION OPTIONS

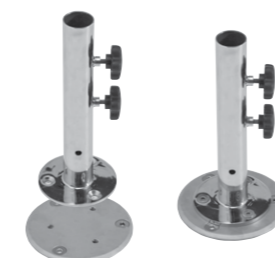
You can either use your umbrella with a freestanding base or instead install it using our stainless steel spigot and base plate system or a camlock spigot system. The base plate is bolted down to a timber deck or a concrete patio and the removable spigot is then fixed to the base plate.



35KG CONCRETE RING BASE



25KG OR 35KG GALVANISED STEEL BASES



SPIGOT & BASE PLATE  
For installation onto a wooden deck or concrete patio.



CAMLOCK 40MM SPIGOT



COVER BAG  
Highly recommended and easy to use. Will double the life of your umbrella fabric.



### CANOPY FABRIC

EUROPEAN MADE, 100% SOLUTION-DYED, ACRYLIC CANVAS.

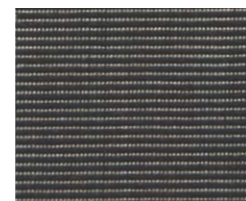
Our premium marine-grade fabric comes with a 5 year warranty and has the best available colour fastness rating of 7-8 out of 8\*. It also has the highest possible rating of UPF 80, cutting out the maximum amount of harmful UV light for excellent sun protection.

\*Colours with red colour pigmentation (red, orange, yellow etc) will have lower colour fastness than other colours and will show some fading earlier.

### CANOPY COLOURS

Please contact us to check colour availability.  
Fabric colours may vary slightly from printed swatches shown.

#### STANDARD ACRYLIC COLOURS

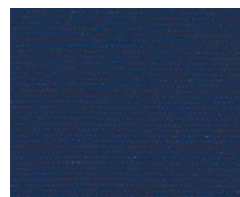


CHARCOAL R770



ECRU R117

#### NON-STANDARD ACRYLIC COLOURS



NAVY BLUE R170



ROYAL BLUE R172



LIGHT BLUE R193



TURQUOISE R171



PISTACHIO R160



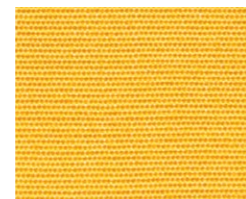
FOREST GREEN R102



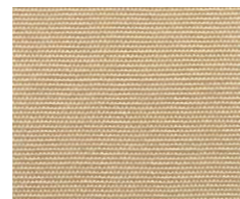
RED R176



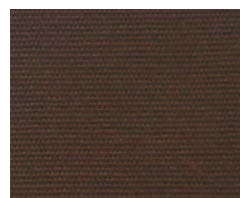
ORANGE R567



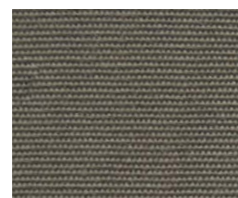
YELLOW R554



BEIGE R100



BROWN R156



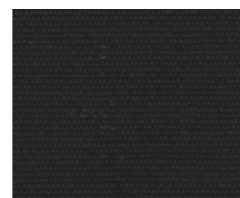
TAUPE R127



CADET GREY R138



LINEN R126



BLACK R103

#### STRIPE ACRYLIC COLOURS



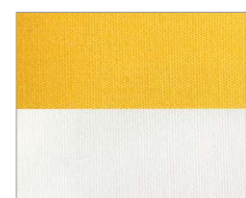
BLUE/WHITE R16



TURQUOISE/WHITE R11



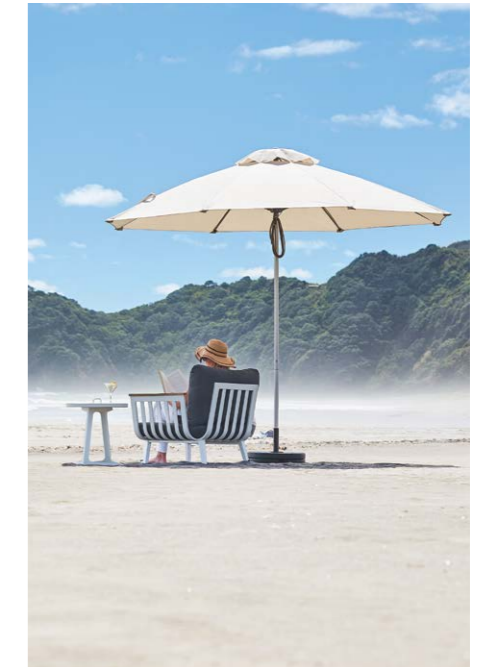
RED/WHITE R12



YELLOW/WHITE R55



BLACK/WHITE R17



### Dimensions

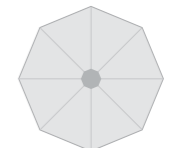
1.9m Square



2.7m Octagonal



3.1m Octagonal



#### Dimensions of open umbrella

a: Width of canopy (cm)	190 x 190	1270 <sup>Ø</sup>	1315 <sup>Ø</sup>
b: Height to top of umbrella (cm)	252	252	272
c: Canopy edge height (cm)	190	190	208
Canopy shade area (m <sup>2</sup> )	3.6	5.2	7.0

#### Dimensions of closed umbrella

Height (cm)	252	252	272
Closed ground clearance (cm)	105	105	100

#### Wind rating guide

Installed wind rating <sup>2</sup>	60kph	80kph	60kph
------------------------------------	-------	-------	-------

#### Weight & packaging dimensions

Package dimensions (cm)	160 x 17 x 17	160 x 17 x 17	192 x 17 x 17
Box volume (m <sup>3</sup> )	0.05	0.05	0.055
Umbrella - plus acrylic canopy (unboxed) (kg)	6	8	10
Boxed weight - plus acrylic canopy (kg)	7	9	11

<sup>1</sup>Measured from point to point. All measurements are rounded and are subject to change

<sup>2</sup>Wind damage is not covered by the warranty.

**SHADE7**  
premium outdoor living



**SHOWROOM/FACTORY:**  
41 Morrin Rd, St Johns,  
Auckland 1072, New Zealand  
ph: +64 (0) 9 570 1112  
email: sales@shade7.co.nz  
www.shade7.co.nz